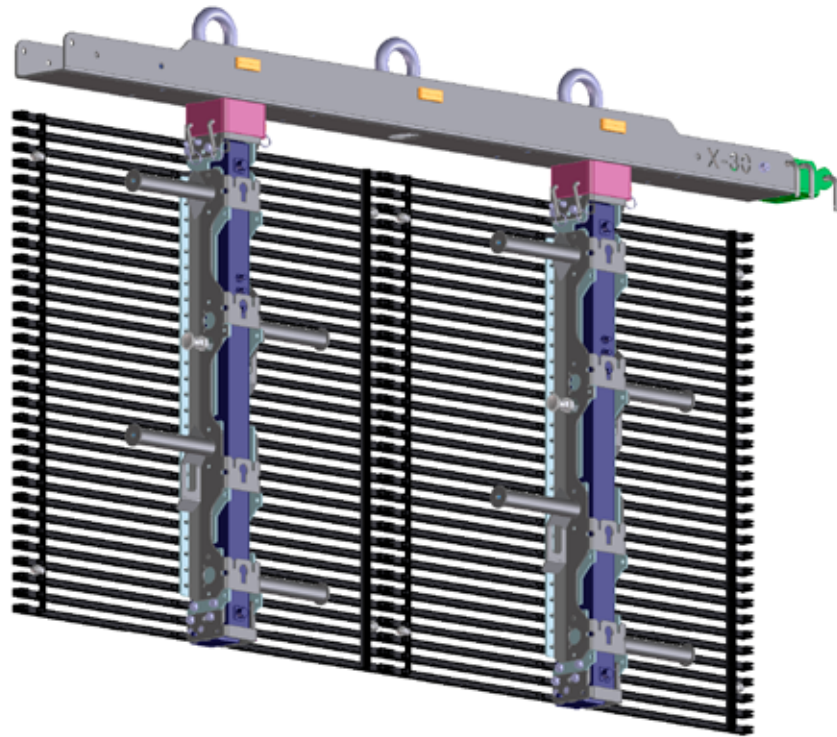


F-30 Touring Mechanics



With its transparent and ultra lightweight design, the PIXLED F-30 LED display is perfectly suited for use in the touring market. A set of rugged F-30 Touring Mechanics has been custom-designed for the F-30 to provide the total solution and meet the needs of this demanding industry.

Engineered with the input of seasoned touring rental companies, the F-30 Touring Mechanics ensure quick build-up and tear down, optimal truck loading for minimal transportation costs and easy access to the screen during the show.

Key benefits:

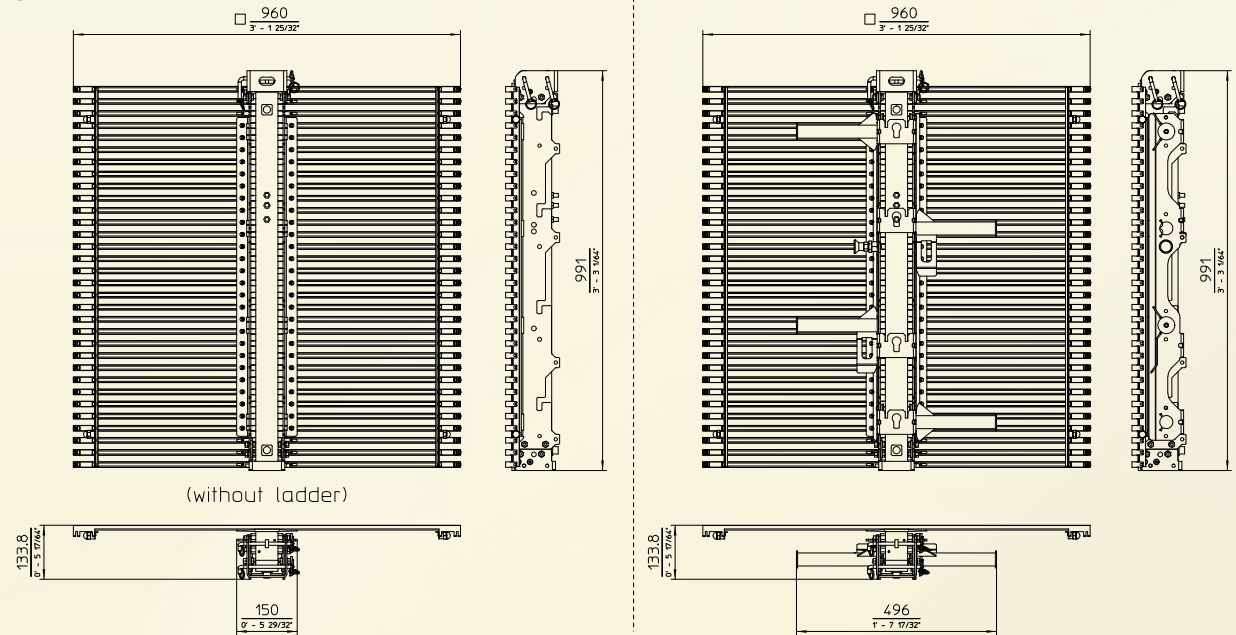
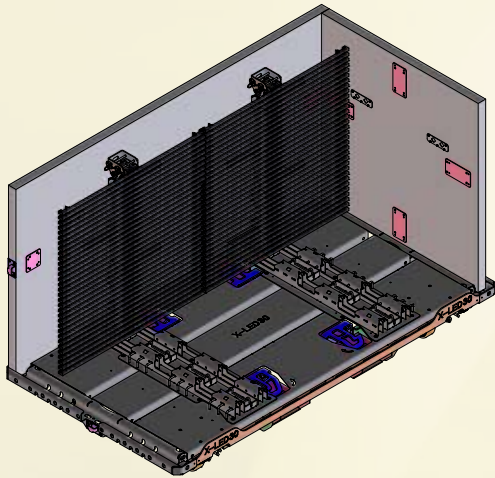
- Quick build-up and tear-down combined with Optimal loading for transportation
- Rugged, easy to use locking systems
- Lightweight, quick-connect hanging brackets guarantee robust to connection truss systems
- Fold-away wheels on dollies enable stacking during transportation & storage
- Removable sides of dollies allow panels to be hoisted directly to and from their transportation housings
- Quick service access to LED screen via clickable climbing ladders
- Climbing ladders can easily be removed to ensure optimal transparency

PIXLED

Lightweight | Creative LED solutions

F-30 Touring Mechanics SPECIFICATIONS*

	F-30 Touring Mechanics
Dimensions Touring Frame (cm) W x H x D	96 x 99 x 13
Dimensions Touring Frame (ft) W x H x D	3.15 x 3.25 x 0.43
Weight Touring Frame + ladder + F-30 module	19,8kg/ 43.65Lbs
Weight ladder	5kg/ 11.02Lbs
Weight/m ² touring version	21,5kg/ 47.40Lbs
Dolly (cm) W x H x D	210 x 135 x 115
Dolly (ft) W x H x D	6.89 x 4.43 x 3.77
Weight empty dolly	335kg/ 738.55Lbs
Weight fully loaded dolly	500kg/ 1.102,31Lbs



The set of F-30 Touring Mechanics consists of:

- Ladder Touring Frames (single module)
- Hanging brackets (single and dual)
- Transport Dollies (8 F-30 modules per dolly)
- Climbing Ladders

Phone Europe: +32 59 33 99 10

Phone US: +1 888 349 8321

Web: www.pixled.com

Email: info@pixled.com



*Specifications subject to change without notice